

W1051

44° Contactless rotary position transducer

Description

Contactless clockwise rotary position sensor.

Main Features

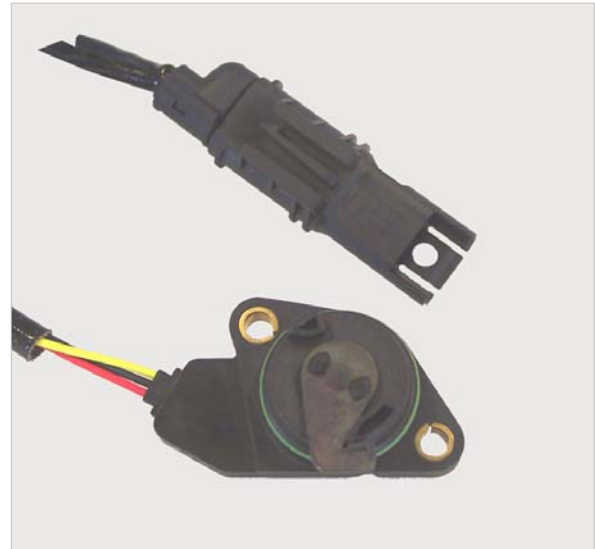
- Contactless technology
- Low weight sensor
- High temperature range

Benefits

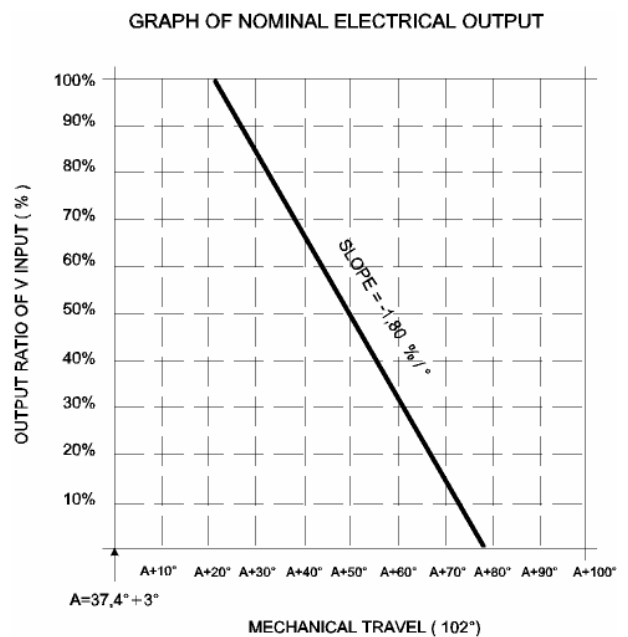
- No contact wear
- High precision

Typical Applications

Throttle, pedal, clutch position sensing in racing engines and vehicle



Typical Performance



W1051

44° Contactless rotary position transducer

Technical Characteristics

Typical application Throttle and pedal position

Power supply

 normal working range $5 \pm 10\%$ V

 reverse voltage protection -14.5 V

Operating temperature

 functional -40 to 150 °C

Spring return torque

 minimum return..... 20-50 mN·m

 maximum wind up..... 160 mN·m

Vibration range tested (60 Hz to 1500 Hz) 15 g

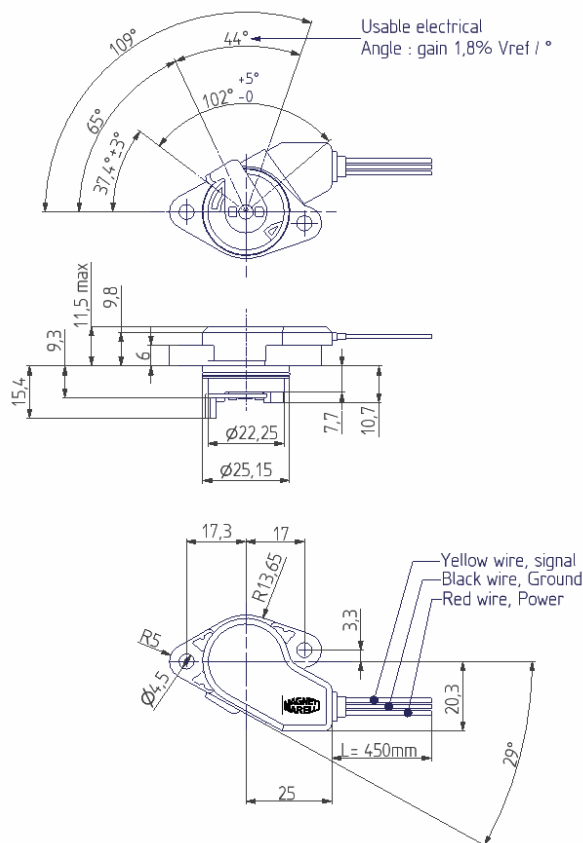
Protection class..... IP 67

Linearity (typ.) $\pm 1.5\%$ f.s.

Electrical angle..... 44°

Weight..... 40 g

Dimensions



Dimensions in millimetres

For further information, please contact:



Magneti Marelli Holding S.p.A.
 Motorsport
 Viale Aldo Borletti, 61/63
 20011 Corbetta (Milano) Italy

Tel. +39 02 972 27 478
 Fax +39 02 972 27 570
 sales@magnetimarelli.com
 http://www.magnetimarelli.com

November 2007
 rel. 03
 page 2 of 2