

WINTAX4 USER

Data acquisition and analysis
Expert level

Description

Magneti Marelli's WINTAX4 USER combines a full set of top-level data analysis functions with a clear and intuitive user interface to provide a complete package for expert race engineers.

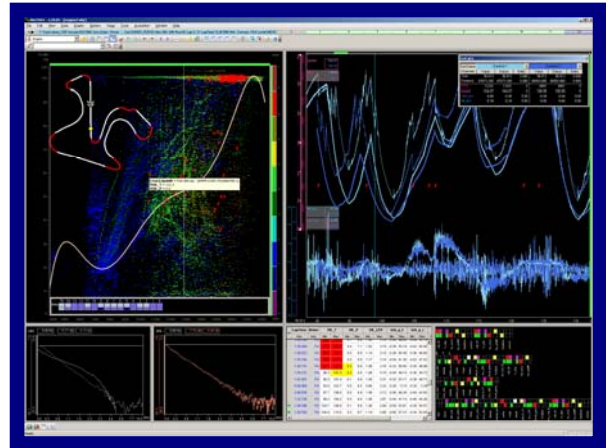
Data downloaded from a Marelli data logging system can be presented in a wide variety of formats while extensive maths channel functions allow in-depth analysis of all aspects of race car performance.

Quick, easy-to-use commands for creating customised screen layouts, containing multiple graphs and reports, together with powerful lap comparison options make WINTAX4 USER an essential tool at the race track and at the dyno.

For the expert race engineer, WINTAX4 USER is a vital addition to the data logging system.

Main Features

- Multi channels time & distance graph
- 2d & 3d scatter plots
- Lap-by-lap channels Report and Trend
- Sections Times Report
- Circuit map and GPS data
- Histograms and PSD spectrum analysis
- Bargraph, Diagnostics windows
- Multiple overlay and data comparison
- User customisable colour schemes, multi Users configurations, multi languages (IT, UK, FR, JP, DE)
- Global channels parameters settings
- Maths channels with graphical editor
- Export to ASCII/CSV/Excel[®] and binary format
- Excel[®] shortcuts linking
- Events, Alarms, Conditions with graphical editor
- Download data from MM loggers (Eth & Card)
- Wizard for acquisition data from MM loggers and session start up
- Automatic task for import/export data
- Automatic Run archive management, Run Preview
- Quick and easy edit lap beacon position
- Extensive Help with context sensitive links



Benefits

- Full performance analysis functionality
- Customisable screen layouts and graphs
- Fast and easy to use
- Compatible with: Windows[®] 2000, Windows[®] XP 32 (recommended), Windows[®] XP 64, Windows[®] Vista 32, Windows[®] Vista 64, Windows[®] Seven
- Compatible with Dual & Quad Core processor

Advanced Features

- Bike modelling and Simulation (optional)
- Vehicle chassis & engine setup database (optional)
- OLE/Automation inter-process communication protocol. VBScript[®], JScript[®] and VBA[®] (optional)
- Import from ASCII/CSV/Excel[®] format (optional)
- Google Earth Map integration
- Library interfaces for reading/writing WINTAX4 archives

Technical support

- Annual license includes software updates and fixes
- Each license is correlated by HW USB dongle key protection

Typical Applications

One make race series, Bike, Touring car

WINTAX4 USER

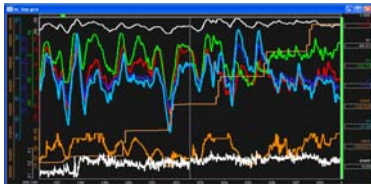
Data acquisition and analysis
Expert level

Main characteristics

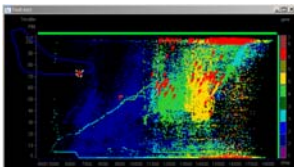
The main screen area of WINTAX4 USER can contain any combination of graphs or reports in which logged data may be represented in a variety of different ways. Commonly-used combinations of analysis windows can be saved as user-defined Layouts. All the characteristics of WINTAX4 JUNIOR are included in WINTAX4 USER.

Graphs

Graphs windows allow to display data against time & distance with many styles (e.g. overlapped or tiled). Different plot modes allow you to arrange the traces to suit particular analysis needs. Data displayed in waveforms can be exported in an Excel spreadsheet just by mouse right click.



2d & 3d Plot



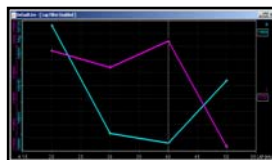
The "XY window" is used to analyse how the values of up to four channels vary with changes in another. "XYZ graphs" are coloured contour plots showing how three channels vary together.

Virtual channels

Virtual channels are generated from user-defined functions of logged data channels. A wide variety of trig, exponential, Boolean and algebraic functions are available.

Trends windows

A lap-by-lap summary of important parameters. Freely configurable to show the min., max. and average of any channel values as well as start- and end-of-lap values.



performances.

Circuit & Google Earth

WinTAX4 allows to calculate and display an accurate trajectory of the vehicle on the circuit.



The circuit map is auto-created from basic logged channels as acceleration, speed and distance or via GPS coordinates.

WinTAX4 designed for boats, allows to define sea race area with buoys position and its style.

Track report channels, useful to identify for example brakes and acceleration areas, can be displayed over Google Earth background image.

Lap Report

A lap-by-lap summary of important parameters. Freely configurable to show the min., max. and average of any channel values as well as start- and end-of-lap values.

Events & Alarms

Advanced checks for automated monitoring of Engine and Chassis can be displayed into waveforms as graphic symbols or as multiline lap-by-lap reports.

Histograms

Data gating: as for all waveforms, data can be filtered by condition.



Import from ASCII (optional)

WinTAX4 provides the possibility to import data saved in any proprietary formats. This allows you to make the system fully open and flexible for both input and output.

Bike Modelling and Simulation (optional)

For the Bike applications WinTAX4 provides a powerful vehicle simulation package to maximise your bike's



Minimum PC requirements

- PC Pentium 1.0 GHz
- Ethernet-TCP/IP network interface
- RAM: 1.0 GB; Free Disk Space: 1 GB

For further information, please contact: